

Registering and Troubleshooting the Google Drive LTI

Canvas has improved its integration with Google Apps making it easier for instructors to include collaborations, content sharing, engaging course content, and assignment distribution directly within Canvas. The integration also makes it easy for students to collaborate with instructors and fellow students on individual or group assignments.

Students and faculty should register the Google Drive service in Canvas to ensure their Geneseo account is associated with Canvas assignments and documents.

Steps

1. Login into [Canvas](#)
2. Click on **Account** in the left blue menu
3. Click on **Settings**
4. Click on Google Drive to register the LTI. Use your Geneseo credentials

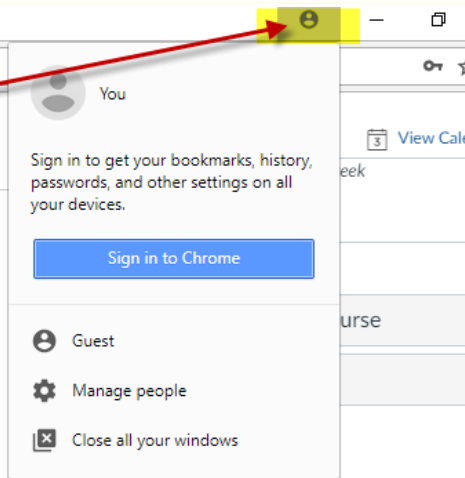
Other Services

Click any service below to register:



Caution! If you are not logged into your Geneseo account, you will not be able to see course materials shared in Google.

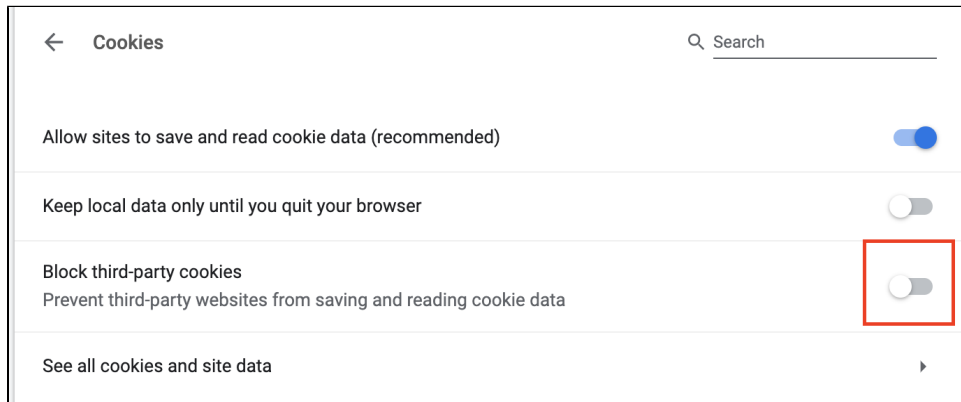
Click on the "People" head in Chrome to see if you are logged in under a different account other than your Geneseo account. If you are logged in with a different account, you will need to logout and login with your Geneseo Credentials



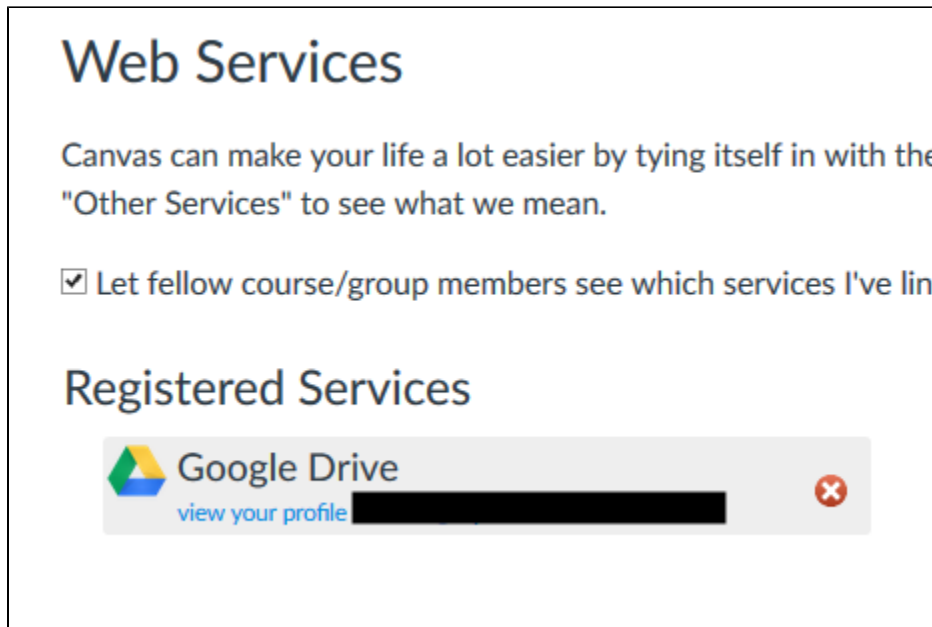
Troubleshooting

If you have already connected your Google Drive account with Canvas but continue to see the "Authorize" prompt in Canvas, here are some troubleshooting steps you can take before contacting CIT. *After each numbered step, please be sure you completely quit the browser before logging into Canvas and trying again; closing the browser window is not sufficient.*

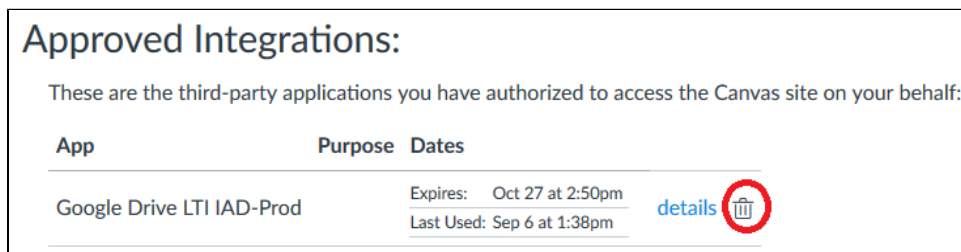
1. Clear your browser's cache and cookies. You can [learn more about the steps required, unique to your browser and device, through this helpful article.](#)
2. Disable "block third-party cookies" (a Chrome account preference).
 - a. Launch Chrome. At the top right, click More (the three vertical dots) > **Settings**
 - b. At the bottom, click **Advanced**
 - c. Under "Privacy and security," click **Site settings**
 - d. Click **Cookies**
 - e. Disable **Block third-party cookies**



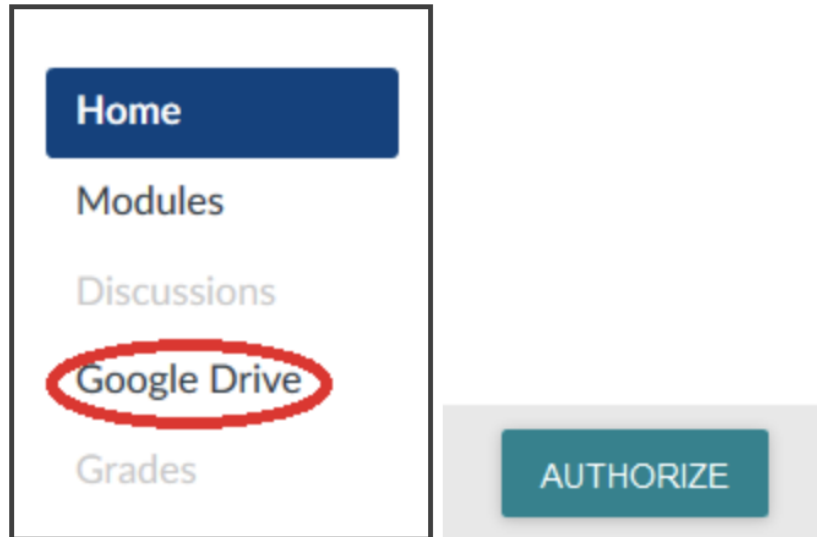
- a.
- 3. Re-register Google Drive in Canvas
 - a. Log into [Canvas](#) and click **Account Settings**
 - b. If **Google Drive** appears as a **Registered Service**, hover over the item and click the **X** and select **OK** to unregister the service.



- a.
- c. If **Google Drive LTI IAD-Prod** is listed as an **Approved Integration**, click the **Trash icon** and click **OK** to delete the integration.

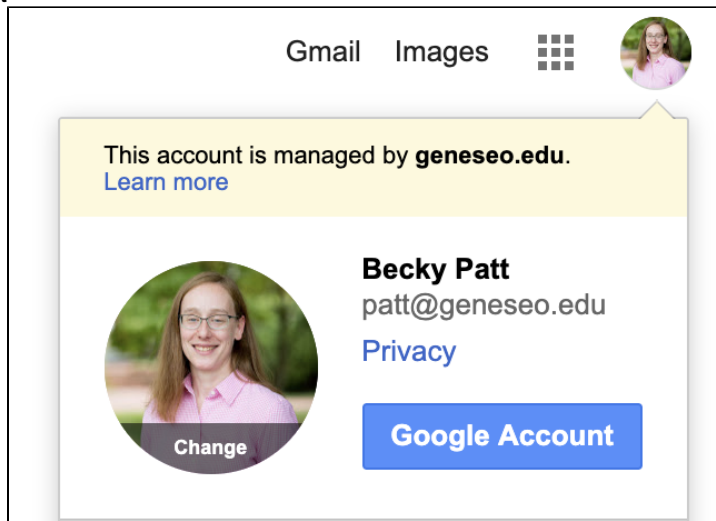


- a.
- d. Return to the Canvas course and click **Google Drive Authorize**

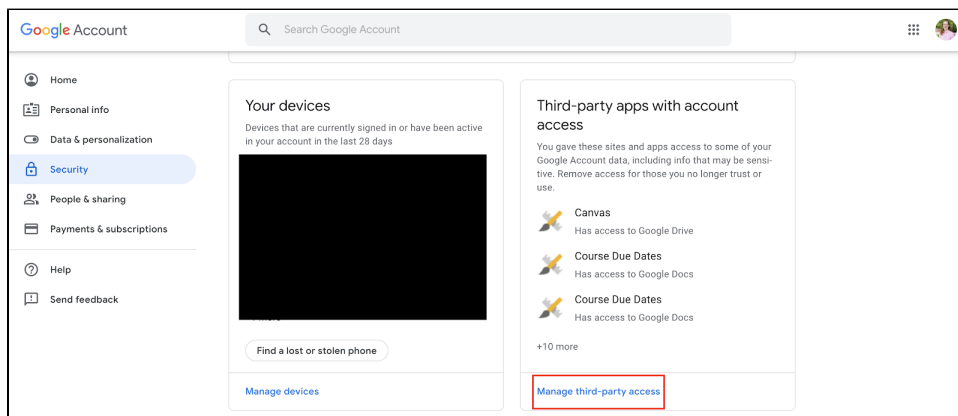


a.
4. Re-authorize Canvas integration via Google account

a. Navigate to <https://www.google.com>. Click **Sign In** and enter your Geneseo credentials. Then click the profile icon and select **Google Account**



i.
b. Click **Security** from the left-hand menu and scroll down until you see **Third-party apps with account access**; click **Manage third-party access**



i.
c. Locate and click on **Canvas**, then select **Remove Access**

Third-party apps with account access

You gave these sites and apps access to some of your Google Account data, including info that may be sensitive. Remove access for those you no longer trust or use. [Learn about the risks](#)



Canvas

Has access to Google Drive

REMOVE ACCESS

Has access to:

Google Drive

See, edit, create, and delete all of your Google Drive files

Homepage:

<http://www.canvaslms.com/>

Access given to:

instructure.com

Access given on:

December 7, 2018

See something suspicious? [Report this app](#)

i.

d. Locate and click on **Google Drive LTI by Canvas**, then select **Remove Access**



Google Drive LTI by Canvas

Has access to Google Drive

REMOVE ACCESS

Has access to:

Google Drive

See, edit, create, and delete all of your Google Drive files

Basic account info

See your personal info, including any personal info you've made publicly available

View your email address

Homepage:

<https://www.instructure.com/>

Access given to:

instructure.com

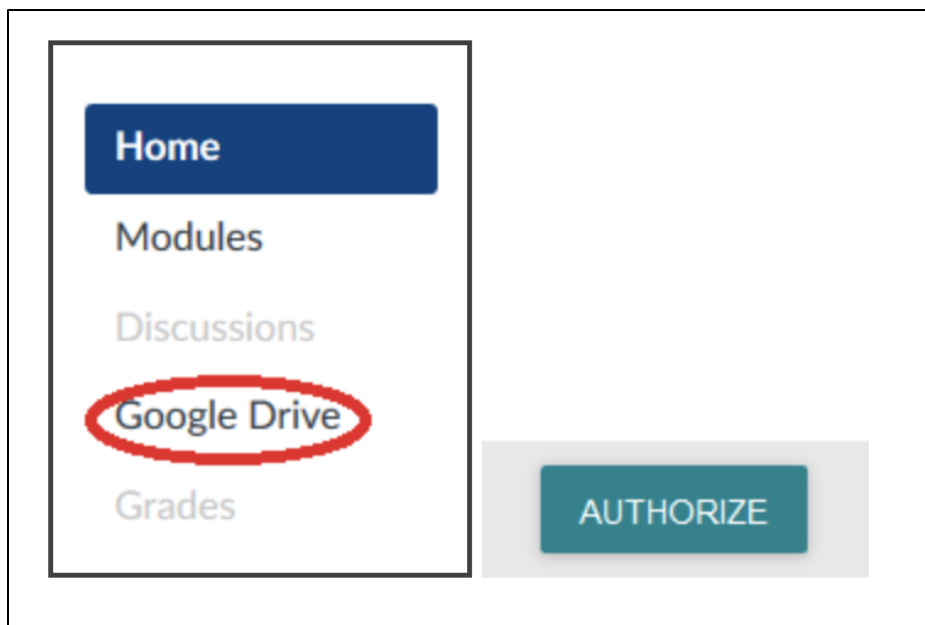
Access given on:

December 7, 2018

See something suspicious? [Report this app](#)

i.

e. Return to the Canvas course and click **Google Drive** **Authorize**



i.

Related Self Help Guides

- [Setting up a Blackboard Collaborate Session in Canvas](#) — The Blackboard Collaborate web conferencing tool has been integrated into Canvas, making synchronous communication, collaboration, and presentation easily accessible. Instructors can set up Collaborate sessions for hosting guest speakers, holding virtual office hours, leading test review sessions, and teaching class sessions online.
- [Overview of Blackboard Collaborate's Interface](#) — Blackboard Collaborate is a simple tool for hosting online meetings, classes, or office hours. What follows is a brief overview of Blackboard Collaborate's interface from within the recommended browser, Google Chrome.
- [TopHat Canvas Integration & Grades Sync](#) — Linking Top Hat and Canvas together gives you a ton of amazing features! Automagically sync grades, and keep your student roster up-to-date.
- [Registering and Troubleshooting the Google Drive LTI](#) — Canvas has improved its integration with Google Apps making it easier for instructors to include collaborations, content sharing, engaging course content, and assignment distribution directly within Canvas. The integration also makes it easy for students to collaborate with instructors and fellow students on individual or group assignments.
- [Faculty Enlight Book Adoptions & Bookstore for Students](#) — Geneseo has implemented a link to the Barnes & Noble's Enlight Book Adoption site from each Geneseo course. Faculty may also enable a "Bookstore" app to make it easy for their students to purchase course materials from Barnes & Noble. Faculty should refer to [Textbook Information on the Provost Website](#) for information about deadlines and [textbook adoption instructions](#).
- [Adding Open Learning Initiative \(OLI\) Content to your Canvas Course](#) — SUNY has a partnership with Lumen Learning and Carnegie Mellon University's Open Learning Initiative (OLI) that provides access to courses at no cost for all SUNY campuses and students. Course adoption is as easy as filling out a request form in our Ready-to-Adopt catalog at oer.suny.edu.

When you adopt an OER course, it can be easily integrated into a Canvas module.

- [Integrating your Pearson MyLab or Mastering](#)
- [LTI \(External Apps\) Integration Notes](#) — This self help document is a collection of informations about the integrations installed for all courses. You can link to them through course modules and create assignments for assessment tools
- [MyLab & Mastering Coordinator courses and Canvas gradebook sync](#) — If you are using a Coordinator course within Pearson, you must enable the Canvas/MyLab & Mastering integration first. Otherwise, when using Pearson's Coordinator course with corresponding sections, you will not be able to integrate MyLab & Mastering with Canvas. You can, however, follow the steps detailed below to export grades from MyLab & Mastering and import to the Canvas gradebook.

More Help

For questions about Canvas, contact CIT via our [online service desk](#) or email canvas@geneseo.edu. Weekdays between 8am-4pm, you can also [contact us via our real-time chat portal](#).

For tips, tricks, and updates on learning technologies at Geneseo, visit our [Educational Technology Chat](#). To explore Canvas Guides (created by Instructure), visit <https://community.canvaslms.com/community/answers/guides/canvas-guide>



