

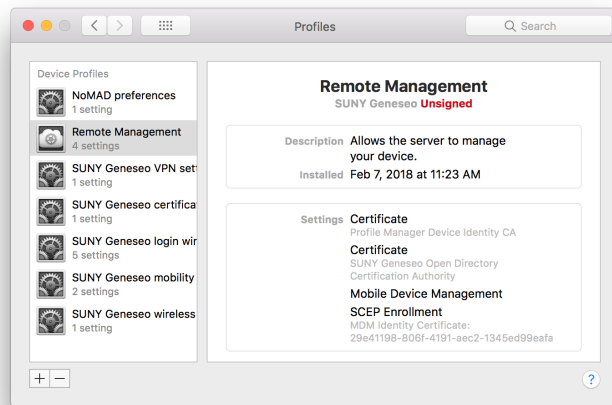
Remove the Remote Management configuration profile from my Mac

The Remote Management configuration profile on your Mac was installed by CIT during the computer's initial setup. It allows CIT to administer your computer with an Apple-developed service called Profile Manager.

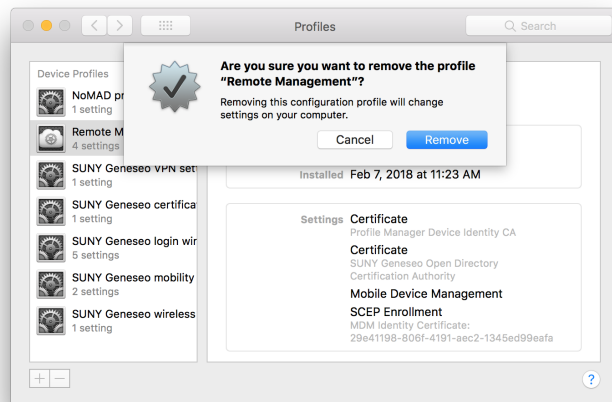
CIT is no longer using Profile Manager actively, however, so you may see pop-up warnings on your Mac about the Remote Management configuration profile expiring. The fix for those messages is to simply remove the profile. Here's how to do that.

Steps

- Open **System Preferences**
- Click the **Profiles** tab
- Highlight the **Remote Management** profile, then click the "-" icon in the bottom-left hand corner of the window to remove it



- Click the **Remove** button to remove the profile



You may be prompted to enter an administrator's username and password to complete the removal



If the above steps do not successfully remove the profile, please contact your department's Technology Support Professional for further assistance.

More Help

For questions, contact the CIT HelpDesk by calling (585) 245-5588, or visiting our [online service desk](#).

