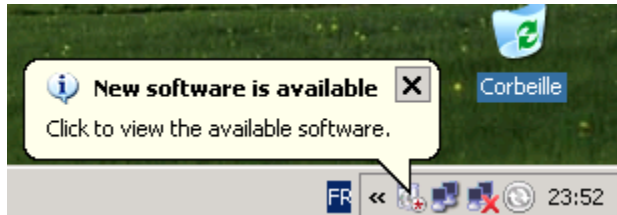


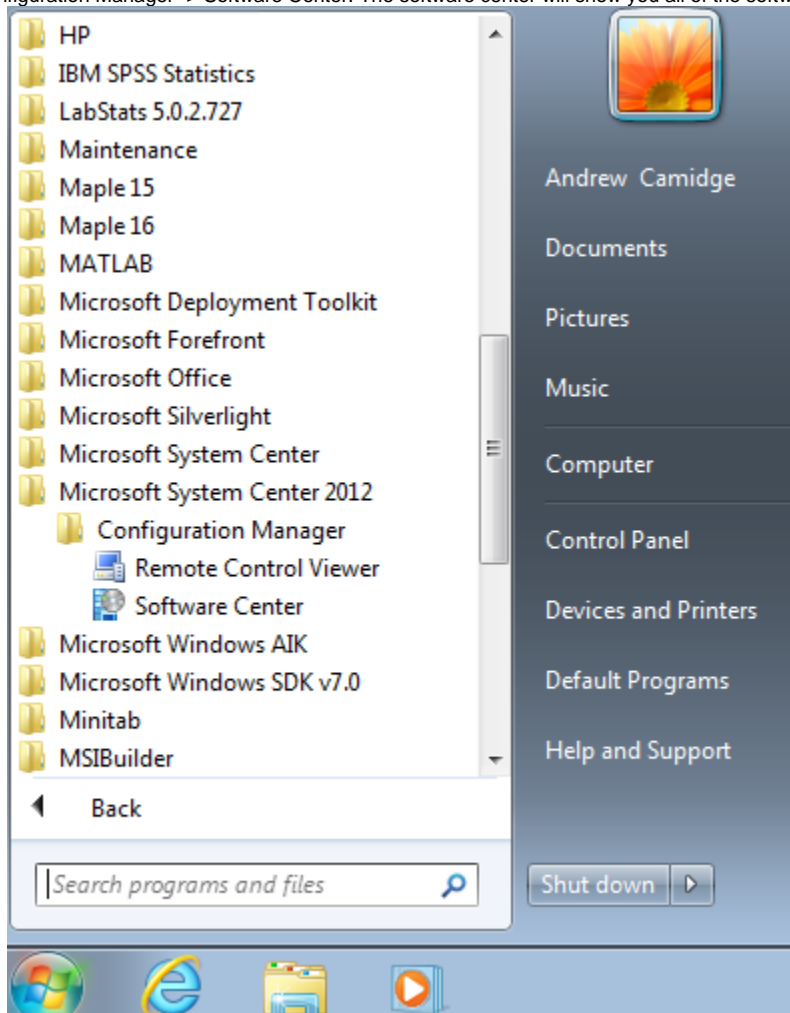
Software Center - Microsoft Office 2013 (Windows) for Faculty & Staff

Beginning October 1, Software Center on your Windows computer will offer to install Microsoft Office 2013. Office is the first program CIT will distribute to campus Windows computers via Software Center.

Shortly after we make Office available, you may see this bubble pop up on your computer. When the bubble appears, you can click on it to see what new software is available to you.



If you would rather install Office at a later time, you can run Software Center from the start menu. Navigate to Start Menu -> Microsoft System Center 2012 -> Configuration Manager -> Software Center. The software center will show you all of the software that is currently available to you.



Please contact the CIT HelpDesk at 585-245-5588 if you have any questions about Software Center or installing college-licensed software on your computer.